

CAREER PATHS IN HEALTH CARE

4-YEAR OR MORE COLLEGE DEGREE AND/OR EQUIVALENT EXPERIENCE

Medical and Health Services Managers
\$37.57

Physical Therapists
\$38.93

1-2-YEAR COLLEGE DEGREE (OR CREDENTIAL)

Registered Nurses
\$30.24

Nursing Assistants
\$13.50

Licensed Practical and Licensed Vocational Nurses
\$21.27

HIGH SCHOOL DIPLOMA OR GED / ON-THE-JOB TRAINING

Personal and Home Care Aides
\$12.68

Home Health Aides
\$12.41

Medical Secretaries
\$17.64

Social and Human Service Assistants
\$18.39

These jobs are in demand in Southwest Minnesota and these are Southwest Minnesota Median wages. Data collected from Department of Employment and Economic Development.

WHY CHOOSE A CAREER IN HEALTH CARE?

According to DEED's 2014 to 2024 Employment Outlook data, the Southwest Minnesota Health Care and Social Assistance sector is projected to gain another 3,100 jobs over the next decade, a 10.4 percent increase. In fact, the projected job growth in health care is expected to exceed the total job growth in the region. Because of the steady growth in health care and social assistance, many health care-related occupations exist at every education level and are in high demand according to DEED's Occupations in Demand too.

A proud partner of the
americanjobcenter
network

**SOUTHWEST MINNESOTA
PRIVATE INDUSTRY COUNCIL**

**SOUTH CENTRAL
WORKFORCE
COUNCIL**

**MINNESOTA
WORKFORCE
CENTER**



CAREER PATHS IN HEALTH CARE

4-YEAR OR MORE COLLEGE DEGREE AND/OR EQUIVALENT EXPERIENCE

MEDICAL AND HEALTH SERVICES MANAGERS \$37.57 Plan, direct, or coordinate medical and health services in hospitals, clinics, managed care organizations, public health agencies, or similar organizations.

PHYSICAL THERAPISTS \$38.93 Assess, plan, organize, and participate in rehabilitative programs that improve mobility, relieve pain, increase strength, and improve or correct disabling conditions resulting from disease or injury.

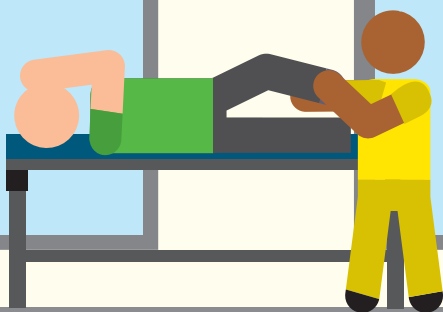


1-2-YEAR COLLEGE DEGREE (OR CREDENTIAL)

REGISTERED NURSES \$30.24 Assess patient health problems and needs, develop and implement nursing care plans, and maintain medical records. Administer nursing care to ill, injured, convalescent, or disabled patients. May advise patients on health maintenance and disease prevention or provide case management. Licensing or registration required.

NURSING ASSISTANTS \$13.50 Provide basic patient care under direction of nursing staff. Perform duties such as feed, bathe, dress, groom, or move patients, or change linens. May transfer or transport patients. Includes nursing care attendants, nursing aides, and nursing attendants.

LICENSED PRACTICAL AND LICENSED VOCATIONAL NURSES \$21.27 Care for ill, injured, or convalescing patients or persons with disabilities in hospitals, nursing homes, clinics, private homes, group homes, and similar institutions. May work under the supervision of a registered nurse. Licensing required.



HIGH SCHOOL DIPLOMA OR GED / ON-THE-JOB TRAINING

PERSONAL AND HOME CARE AIDES \$12.68 Assist the elderly, convalescents, or persons with disabilities with daily living activities at the person's home or in a care facility. Duties performed at a place of residence may include keeping house (making beds, doing laundry, washing dishes) and preparing meals. May provide assistance at non-residential care facilities. May advise families, the elderly, convalescents, and persons with disabilities regarding such things as nutrition, cleanliness, and household activities.

HOME HEALTH AIDES \$12.41 Provide routine individualized healthcare such as changing bandages and dressing wounds, and applying topical medications to the elderly, convalescents, or persons with disabilities at the patient's home or in a care facility. Monitor or report changes in health status. May also provide personal care such as bathing, dressing, and grooming of patient.

MEDICAL SECRETARIES \$17.64 Perform secretarial duties using specific knowledge of medical terminology and hospital, clinic, or laboratory procedures. Duties may include scheduling appointments, billing patients, and compiling and recording medical charts, reports, and correspondence.

SOCIAL AND HUMAN SERVICE ASSISTANTS \$18.39 Assist in providing client services in a wide variety of fields, such as psychology, rehabilitation, or social work, including support for families. May assist clients in identifying and obtaining available benefits and social and community services. May assist social workers with developing, organizing, and conducting programs to prevent and resolve problems relevant to substance abuse, human relationships, rehabilitation, or dependent care.

