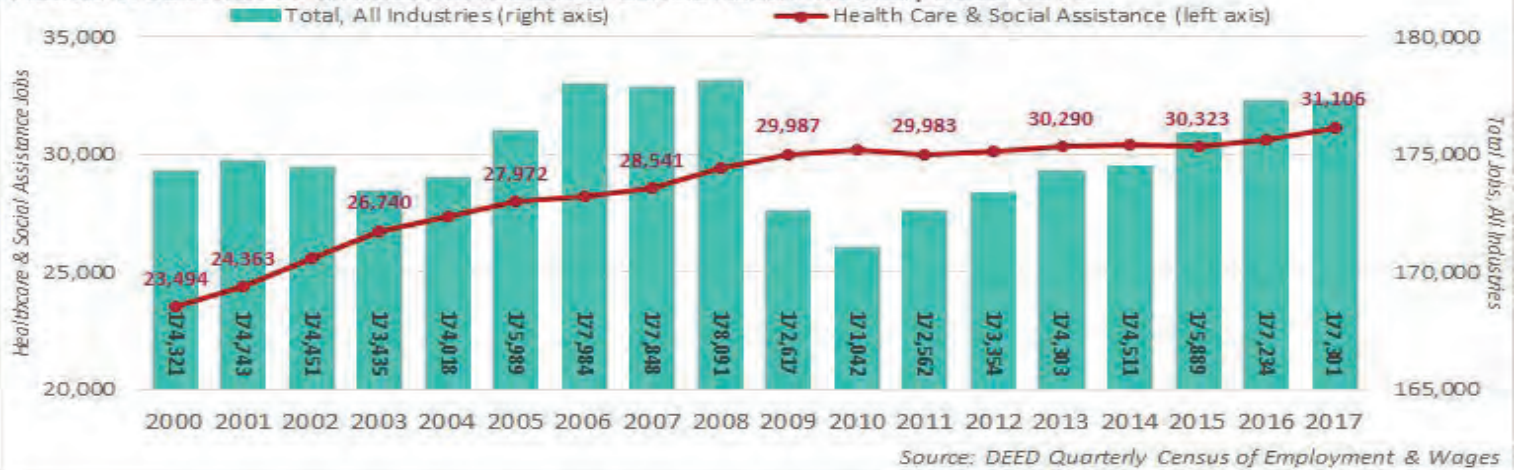


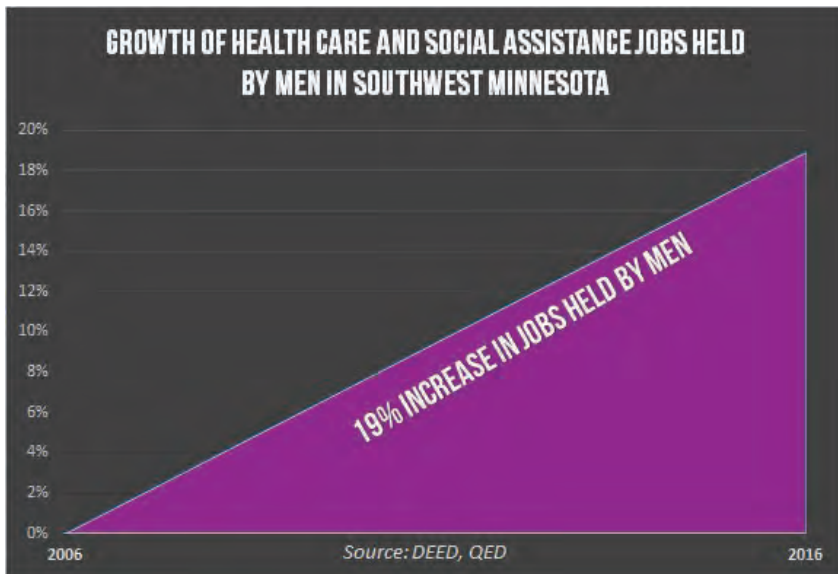
HEALTH CARE CAREERS

IN SOUTHWEST MINNESOTA

FIGURE 1. SOUTHWEST MINNESOTA INDUSTRY EMPLOYMENT TRENDS, 2000-2017



Despite economic fluctuations in the region across other industries, health care and social assistance providers in Southwest Minnesota have continually added jobs over the past 17 years.



NONTRADITIONAL HEALTH CARE CAREERS FOR MEN IN SOUTHWEST MINNESOTA	
REGISTERED NURSES (RN'S) \$62,899/YR	MEDICAL ASSISTANTS \$34,549/YR
NURSING ASSISTANTS (CNA'S) \$28,080/YR	DENTAL ASSISTANTS \$48,963/YR
LICENSED PRACTICAL NURSES (LPN'S) \$44,242/YR	MEDICAL RECORDS & HEALTH INFORMATION TECHNICIANS \$40,685/YR
NURSE PRACTITIONERS (NP'S) \$109,533/YR	PHLEBOTOMISTS \$31,346/YR

The Health Care and Social Assistance industry is female-dominated, with women holding 81% of jobs in Southwest Minnesota. However, the number of jobs held by men increased 19% over the past 10 years. There are several Non-Traditional Healthcare Careers for men, including CNA's, LPN's, RN's, and NP's. A Non-Traditional Healthcare Career for women are Chiropractors, whose median annual wage is \$56,368.



A proud partner of the
americanjobcenter
network

SOUTH CENTRAL
WORKFORCE
COUNCIL

SOUTHWEST MINNESOTA
PRIVATE INDUSTRY COUNCIL



HEALTH CARE CAREERS IN SOUTHWEST MINNESOTA



In Demand Healthcare Careers REGISTERED NURSE(RN) LAB TECHNICIAN

EDUCATION

- Bachelor of Science in Nursing (BSN), Associate's degree in Nursing (ADN) or Diploma from approved Nursing program.
- Associate's degree or a postsecondary certificate.

IMPORTANT QUALITIES

- Critical-thinking skills
- Communication skills
- Compassion
- Detail oriented
- Emotional stability
- Organizational skills
- Physical stamina

WHAT THEY DO

- Patient care, maintain medical records, educate patients and the public about various health conditions, and provide advice and emotional support.
- Medical laboratory technicians collect samples and perform tests to analyze body fluids, tissue, and other substances.

EMPLOYMENT OPPORTUNITIES

MEDIAN HOURLY \$28.80
REGISTERED NURSE \$43.87

Registered nurses are the largest healthcare occupation with over 20,000 openings expected in Minnesota over the next 10 years.

MEDIAN HOURLY \$18.85
LAB TECHNICIAN \$23.97

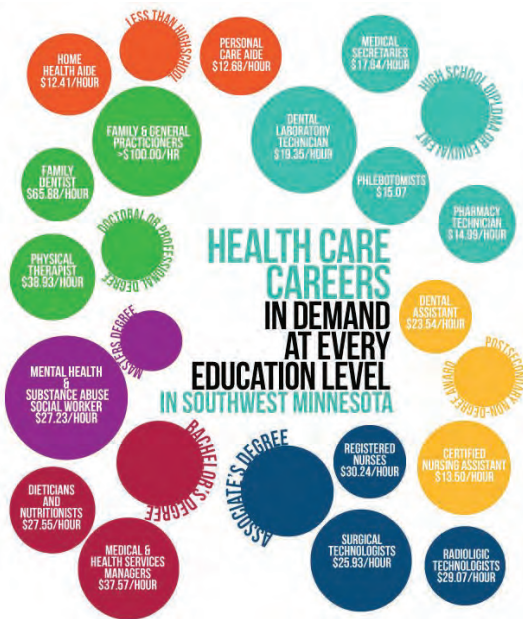
Statewide Demand is Above Average with 1,200 openings expected in the next 10 years.

WORK ENVIRONMENT

RNs work in hospitals, physicians' offices, home and healthcare services, and nursing care facilities. In close contact with people and may spend a lot of time on their feet and lifting.

About half of all medical laboratory technicians and technicians were employed in hospitals. Others worked in doctor's offices or diagnostic laboratories.

The job growth is expected to be largest and fastest in home health care services, which may grow nearly 50 percent, or 719 additional jobs. Job growth at nursing and residential care facilities is expected to be split between community care and assisted living facilities for the elderly, which may gain almost 450 jobs, and residential mental health facilities, which could add about 650 new jobs. In contrast, the region is expected to lose jobs at nursing care facilities and other residential care facilities. Hospitals are projected to see about 2 percent growth, adding just 179 jobs from 2014 to 2024, primarily at privately-owned hospitals, compared to losses at government-owned hospitals.



Because of the steady growth in health care and social assistance, many health care-related occupations exist at every education level and are in high demand according to DEED's Occupations in Demand too. Although the highest paying occupations tend to have the highest educational every education level and are in high demand according to DEED's Occupations in Demand too. Although the highest paying occupations tend to have the highest educational requirements, there are exceptions to the rule. According to DEED's Educational Requirements for Occupations data, Healthcare social workers require a master's degree, but are earning \$21.42 per hour at the median in Southwest Minnesota; while radiologic technologists require just an associate's degree but pay above \$28 an hour at the median.

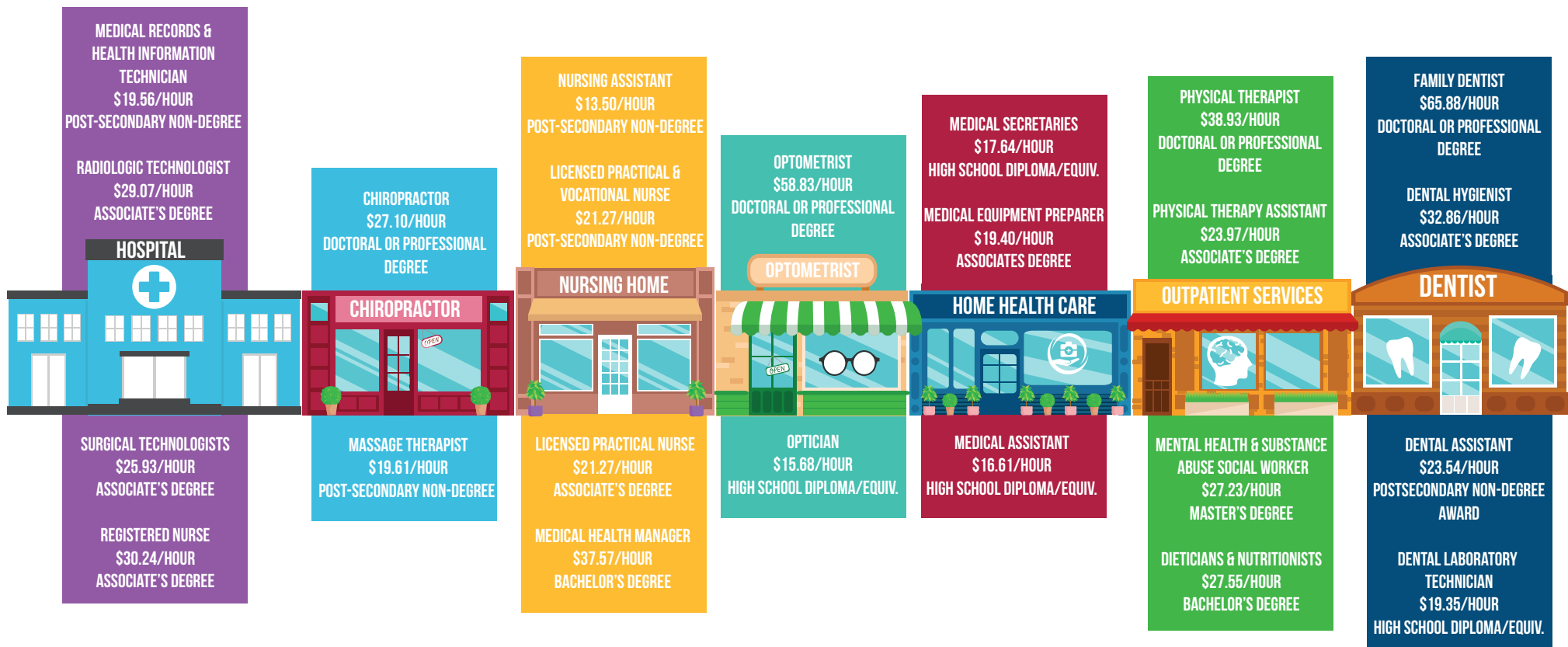
According to DEED's 2014 to 2024 Employment Outlook data, the Southwest Minnesota health care and social assistance sector is projected to gain another 3,100 jobs over the next decade, a 10.4 percent increase. That is much faster than the projected growth rate in the region, which is expected to grow just 1.0 percent across all industries. In fact, the projected job growth in health care is expected to exceed the total job growth in the region.

PROJECTED HEALTH CARE & SOCIAL ASSISTANCE EMPLOYMENT IN SOUTHWEST MINNESOTA



HEALTH CARE CAREERS

IN SOUTHWEST MINNESOTA



HOME HEALTH AIDE
\$12.41/HOUR

LESS THAN HIGH SCHOOL

PERSONAL CARE AIDE
\$12.68/HOUR

MEDICAL SECRETARIES
\$17.64/HOUR

HIGH SCHOOL DIPLOMA OR EQUIVALENT

FAMILY DENTIST
\$65.88/HOUR

FAMILY & GENERAL PRACTITIONERS
>\$100.00/HR

DENTAL LABORATORY TECHNICIAN
\$19.35/HOUR

PHLEBOTOMISTS
\$15.07

PHARMACY TECHNICIAN
\$14.99/HOUR

PHYSICAL THERAPIST
\$38.93/HOUR

DOCTORAL OR PROFESSIONAL DEGREE

HEALTH CARE CAREERS IN DEMAND AT EVERY EDUCATION LEVEL IN SOUTHWEST MINNESOTA

DENTAL ASSISTANT
\$23.54/HOUR

POSTSECONDARY NON-DEGREE AWARD

MENTAL HEALTH & SUBSTANCE ABUSE SOCIAL WORKER
\$27.23/HOUR

MASTERS DEGREE

BACHELOR'S DEGREE

ASSOCIATE'S DEGREE

REGISTERED NURSES
\$30.24/HOUR

CERTIFIED NURSING ASSISTANT
\$13.50/HOUR

DIETICIANS AND NUTRITIONISTS
\$27.55/HOUR

MEDICAL & HEALTH SERVICES MANAGERS
\$37.57/HOUR

SURGICAL TECHNOLOGISTS
\$25.93/HOUR

RADIOLOGIC TECHNOLOGIST
\$29.07/HOUR



A proud partner of the
americanjobcenter
network

SOUTH CENTRAL WORKFORCE COUNCIL

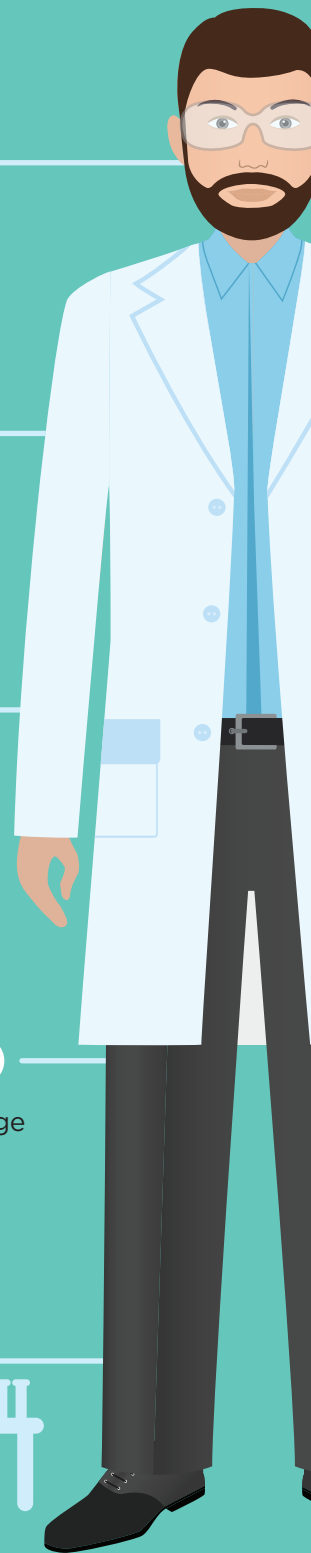
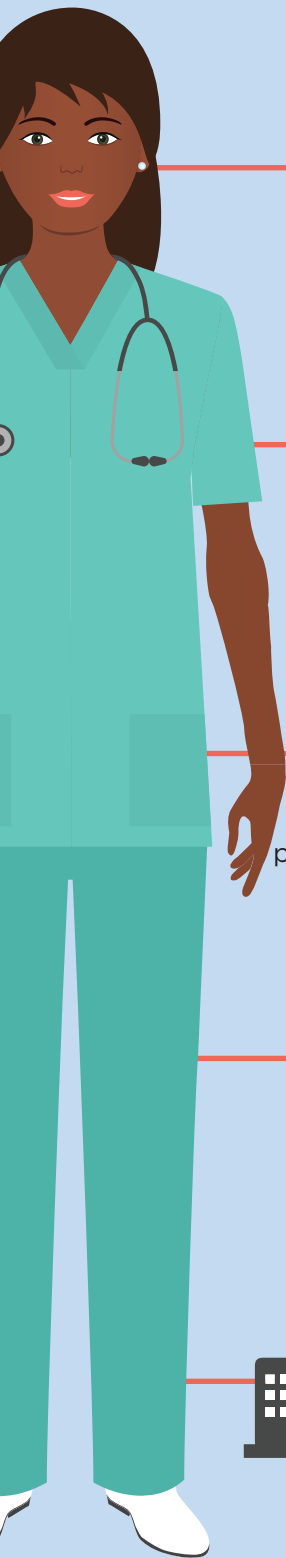
SOUTHWEST MINNESOTA PRIVATE INDUSTRY COUNCIL



In Demand Healthcare Careers

REGISTERED NURSE(RN)

LAB TECHNICIAN



EDUCATION



Bachelor of Science in Nursing (BSN), Associate's degree in Nursing (ADN) or Diploma from approved Nursing program.



Associate's degree or a postsecondary certificate.

IMPORTANT QUALITIES



- Critical-thinking skills
- Communication skills
- Compassion
- Detail oriented
- Emotional stability
- Organizational skills
- Physical stamina



- Ability to use technology
- Detail oriented
- Good dexterity
- Physical stamina

WHAT THEY DO



Patient care, maintain medical records, educate patients and the public about various health conditions, and provide advice and emotional support.



Medical laboratory technologists and medical laboratory technicians collect samples and perform tests to analyze body fluids, tissue, and other substances.

EMPLOYMENT OPPORTUNITIES

MEDIAN HOURLY WAGES **\$28.80** **\$43.87^{TO}**

Registered nurses are the largest healthcare occupation with over 20,000 openings expected in Minnesota over the next 10 years.

MEDIAN HOURLY WAGES **\$18.66** **\$25.01^{TO}**

Statewide Demand is Above Average with 1,200 opening expected in the next 10 years.

WORK ENVIRONMENT



RN's work in hospitals, physicians' offices, home healthcare services, and nursing care facilities. In close contact with people and may spend a lot of time on their feet and lifting.



About half of all medical laboratory technologists and technicians were employed in hospitals. Others worked in doctors' offices or diagnostic laboratories.



A proud partner of the
american job center
network

SOUTH CENTRAL WORKFORCE COUNCIL

SOUTHWEST MINNESOTA PRIVATE INDUSTRY COUNCIL

MINNESOTA WORKFORCE CENTER

Equal Opportunity Employer and Program Provider - Upon request the information in this document can be made available in alternative formats for people with disabilities by contacting Leah Hastad at lhastad@swmnpic.org or 507-760-0199